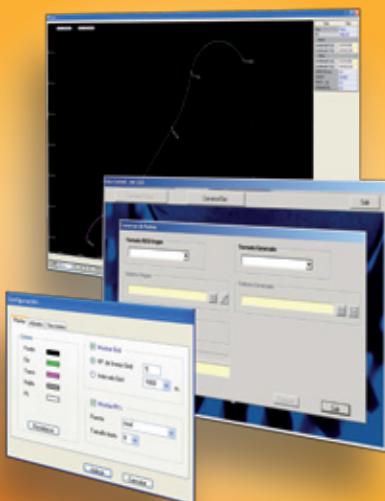


# DATA CONVERT

SOFTWARE FOR  
CONVERTING  
FILES TO TRIMBLE  
FORMATS



**Data Convert simplifies the process of file conversion and data transfer for day to day axis work. Data Convert offers topographers and engineers greater speed and comfort in their daily office work by not having to be constantly introducing the axis, slope and transversal profiles as it converts the project axes and makes them compatible with Trimble equipment.**

- It converts axis files of multiple formats (Clip, Ipsol, Inroads etc.) to Trimble formats (rxl,dc)
- It converts ASCII Points to Trimble formats (dc), drawing exchange files (DXF) and to Digital Level DiNI (dat) files
- It converts axis files of multiple formats (Clip, Ipsol, Inroads etc.) to Trimble Tunnel formats
- It shows graphic visualisation of the axis (ground plan, elevation, transversals) and exportation to DXF